

GETTING STARTED WITH YOUR NEW DISHWASHER

STEP 1 - ADDING RINSE AGENT

FOR PROPER DRYING ALWAYS USE RINSE AGENT even if your detergent already contains it.



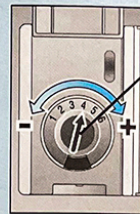
- Lift tab to open.

• Add rinse agent to compartment bearing the symbol shown here, either when the light on the control panel illuminates,



or (model dependent),

• when rinse agent level indicator on the dispenser changes to a light silver color.



- To add rinse agent, pour on the arrow.

- Turn arrow to adjust the amount of rinse agent dispensed.



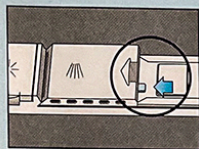
To decrease streaks on glasses

To decrease spots on glasses

TIP: For optimal drying, activate the "Extra Dry Heat" / "Additional Drying Heat" option (model dependent). Refer to Use and Care Manual for instructions.

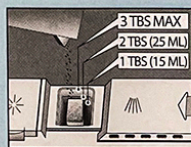
STEP 2 - ADDING DETERGENT

Opening the cover



- Push the blue button in (NOT DOWN)

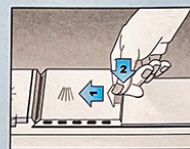
Adding Detergent



- Add detergent to compartment bearing the symbol shown here.
- Use fresh powdered detergent for best results.
- 1 tablespoon will clean most loads, 3 tablespoons max. Do not overfill.
- When using detergent tabs, lay them flat to avoid contact with the cover.



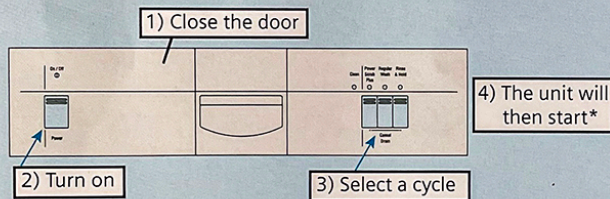
Closing the cover



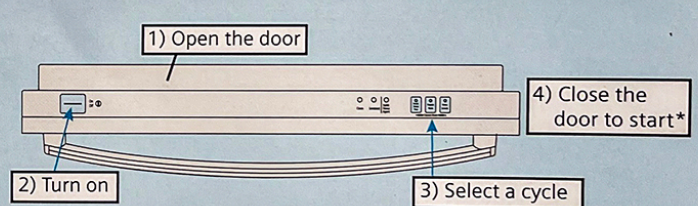
- Slide cover fully left
- Push rear of cover down firmly until you hear the CLICK

STEP 3 - TO START THE DISHWASHER

Exposed Front Controls



Hidden Top Controls



*If unit does not fill with water, ensure that incoming water supply is operational.

STEP 4 - WHEN THE CYCLE IS COMPLETE

When is the Cycle Complete?

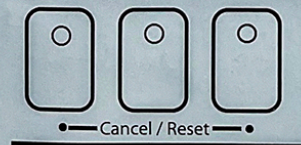
Depending on model you can tell when your unit has completed the cycle in one of the following ways. Please refer to your Use and Care manual for complete details.

- Countdown display at < 0 >
- Cycle completion signal sounds (tone adjustable)
- Clean light illuminates
- Cycle indicator light that shines on floor goes out

Note that on most models you must turn the unit off (and then on again) before you can begin a new cycle.

Canceling a cycle

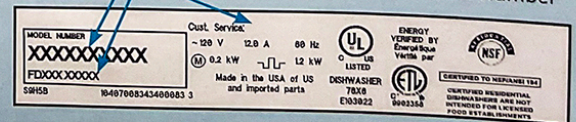
To cancel a cycle in progress, press and hold the two buttons labeled <Cancel Reset> for 3 seconds. If opening the door during a wash cycle, beware of hot water splash-out.



To contact customer service

Open dishwasher door to locate the label on right side. There you will find:

- Model Number
- Serial Number (FD#####)
- Toll Free Customer Service Phone Number



Run Time

To save energy, this dishwasher has a **Smart Control** that automatically adjusts the cycle based on soil loads and incoming water temperature. The **Smart Control** makes decisions that can cause the cycle time and water usage to adjust intermittently, and suddenly change mid-cycle. The cycle times listed in the Use and Care manual are based on normal soil loads and 120°F incoming water and will vary based on your actual conditions.

Program progress and rinsing sounds

